

e-Motion
Adjustable Table



LAZER EDGE

artopex®

A Combination of Look and Comfort

Work efficiently with the e-Motion adjustable table. It allows you to alternate between sitting and standing, while providing a comfortable and stylish work environment. With its digital display keyboard, you can program up to four different heights, for a quick and easy adjustment!

Productivity and well-being benefits



Increases energy

Varying positions throughout the day naturally increases energy levels. Some studies also demonstrate positive effects on mood.



Stimulates concentration and productivity

Working in the standing position keeps you alert and improves concentration, helping to maintain and even increase productivity.



Improves posture

Working in the correct standing position helps to improve posture which can reduce muscular and skeletal system problems.



Good for the heart

Several studies show the positive impact of varying positions on different health issues such as cholesterol, type 2 diabetes and weight management.

Adjustable table, Ginger Root laminate surface with Black base.



Raise your Productivity with e-Motion

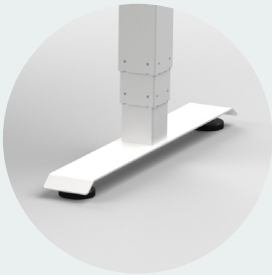
Mechanism

Safety: automatic stop in case of a contact with an obstacle.



Base

Available in Black or White.



Telescopic Legs

Telescopic legs in three sections with two motors and a silent activation.

Surface

Table surface available in the full range of Artopex laminates, with square or round corners.



Keyboard

Multifunctional keyboard with a numeric display and four personalized customizable heights.



Features

Work surface depths	23" or 29"
Adjustment range	24 1/2" à 50"
Adjustment speed	1 3/4" par seconde
Weight capacity	265 lbs



